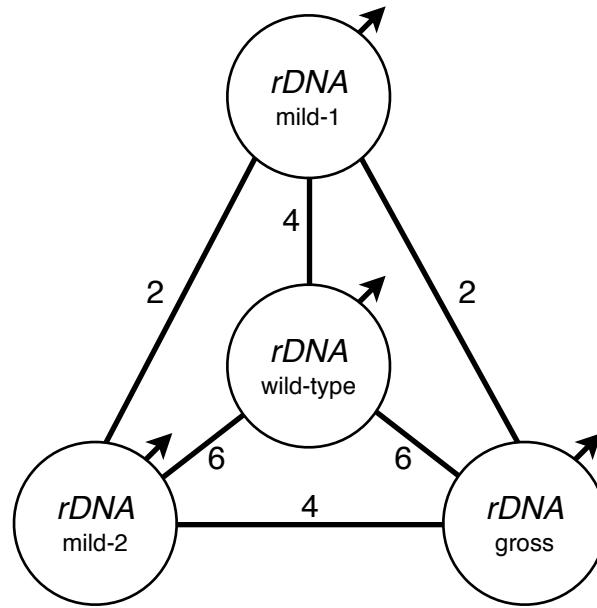
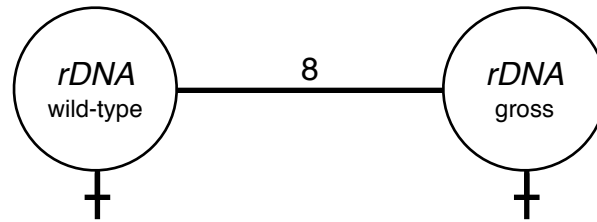
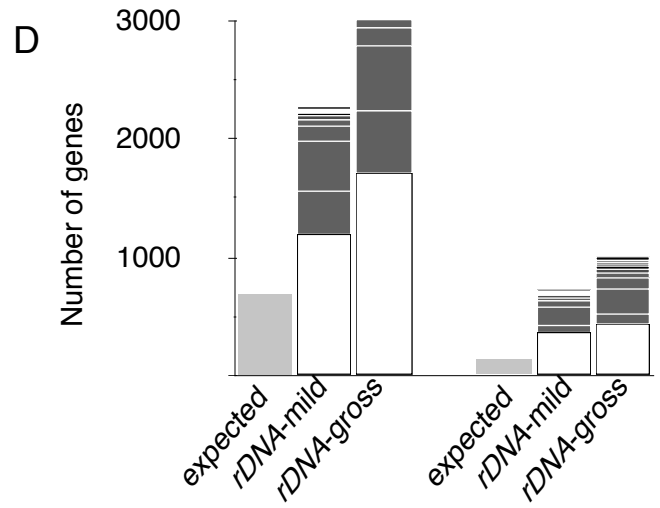
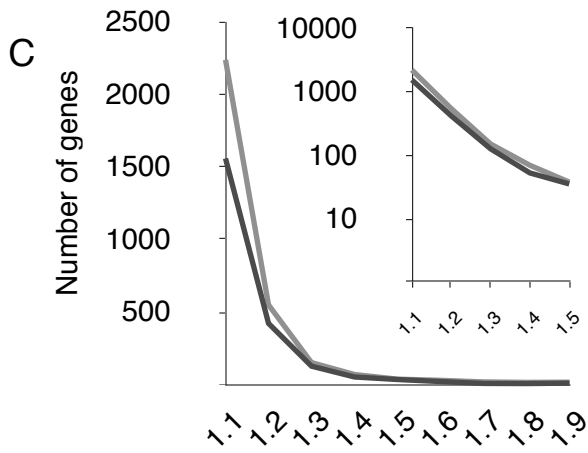
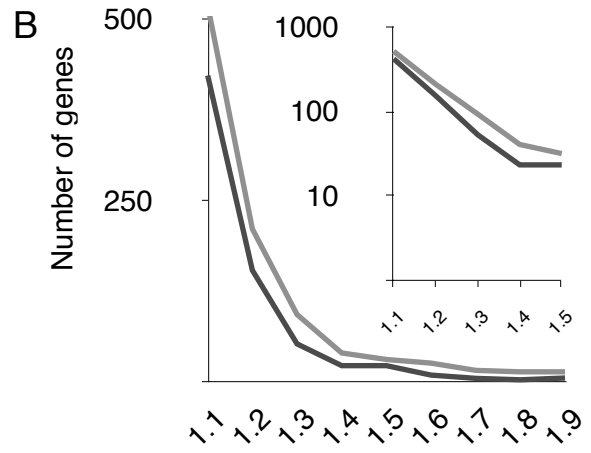
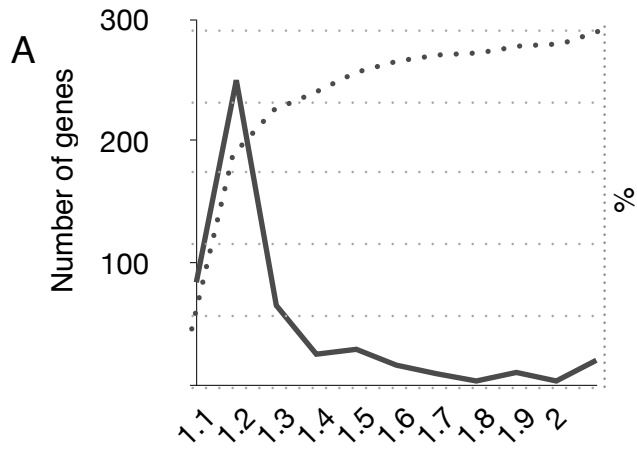


A

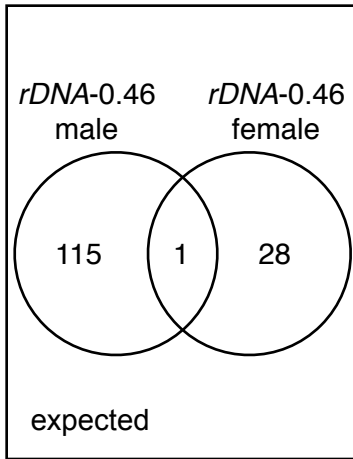


B

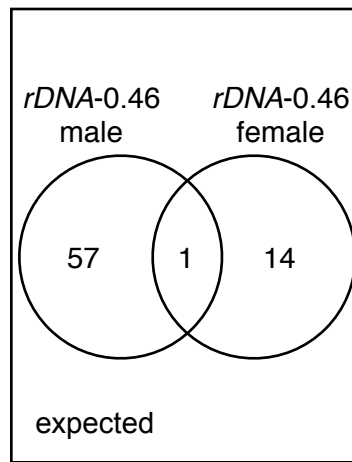
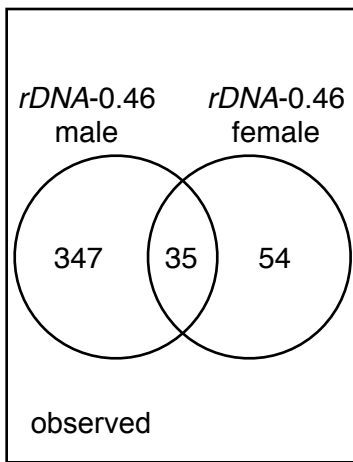




A

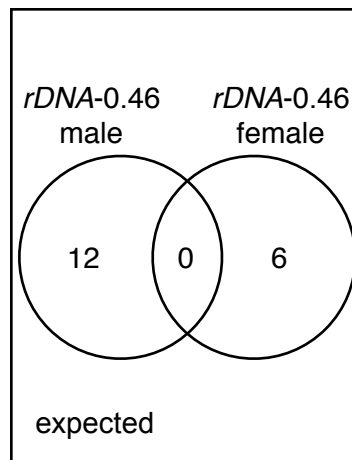
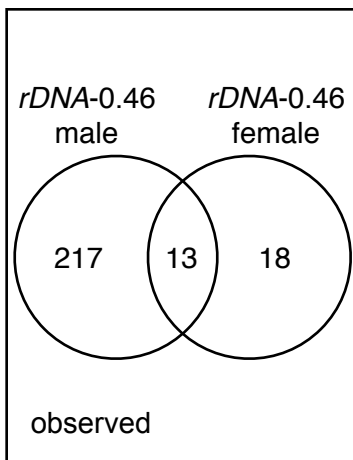


B

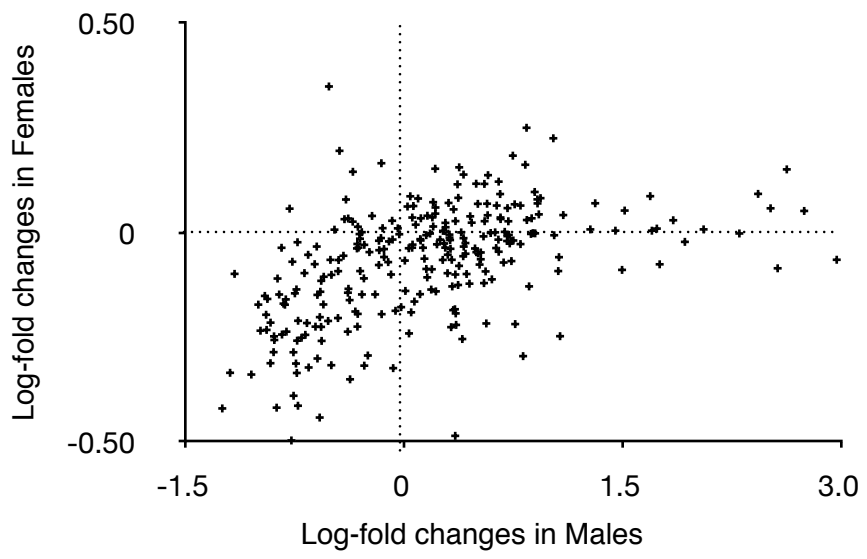


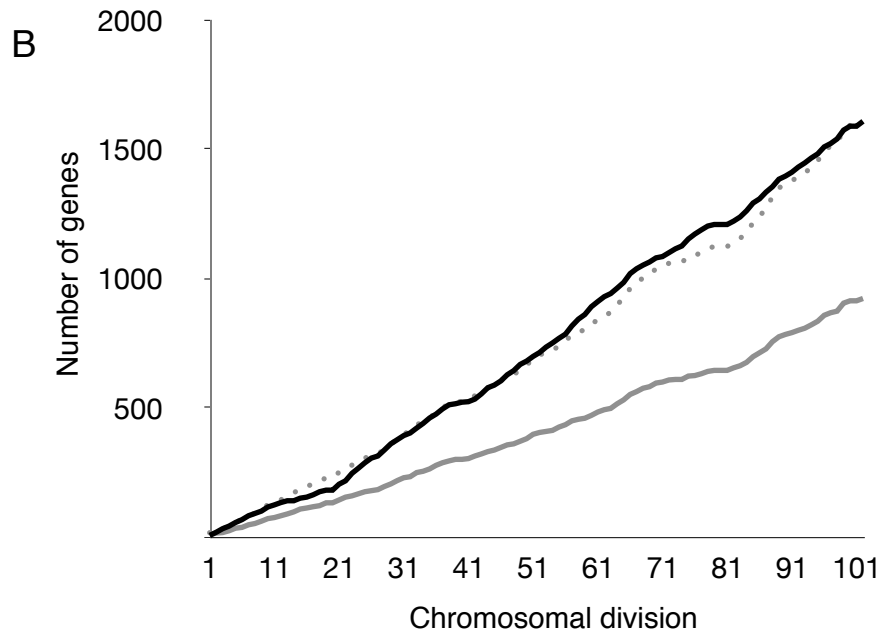
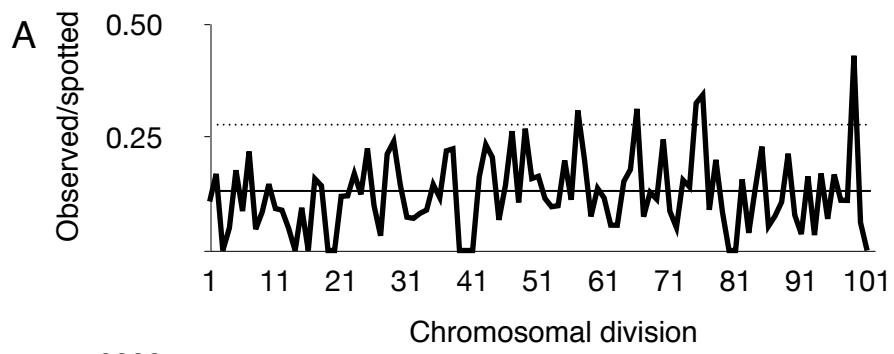
P < 0.005		female	
		up	down
male	up	1	4
	down	0	30

C



P < 0.005		female	
		up	down
male	up	0	1
	down	0	12





P < 0.05 above diagonal, P < 0.005 below diagonal Sample sizes on diagonal	YCongo - YZimb.	YZimb. - YO- hio	YOhio - YCongo	<i>rDNA</i> -mild -1	<i>rDNA</i> -mild-2	<i>rDNA</i> -gross
<i>rDNA</i>-gross	263	323	220	278	441	1165 / 335
<i>rDNA</i>-mild 2	389	343	300	211	1163 / 307	100
<i>rDNA</i>-mild 1	122	130	122	574 / 96	42	63
YOhio - YCongo	700	397	1272 / 240	6	26	13
YZimb. - YOhio	473	1233 / 321	36	10	61	59
YCongo - YZimb.	1345 / 346	90	104	8	49	28

Expected values	YCongo - YZimb.	YZimb. - YO- hio	YOhio - YCongo	<i>rDNA</i> -mild -1	<i>rDNA</i> -mild-2	<i>rDNA</i> -gross
<i>rDNA</i>-gross	50	44	53	110	150	568 / 57
<i>rDNA</i>-mild 2	41	42	53	109	572 / 43	9
<i>rDNA</i>-mild 1	56	44	56	532 / 45	7	8
YOhio - YCongo	253	117	554 / 53	0	3	1
YZimb. - YOhio	114	573 / 53	7	0	0	1
YCongo - YZimb.	543 / 46	5	14	0	0	1